

Volume 4, no. 4 ~ April, 1962



the

GLACIAL

DRIFTER

BOARD OF CONTROL

|                |                        |                          |
|----------------|------------------------|--------------------------|
| President      | Leslie G. Pearl        | 563 Benning, N.W.        |
| Vice President | Willis Atwell          | 52 Fuller, S.E.          |
| Secretary      | Miss Jane Cichaniewicz | 809 Franklin, S.E.       |
| Treasurer      | Mrs. Lucile Pearl      | 1563 Benning, N.W.       |
| Liaison Rep.   | Dr. Richard W. Rose    | 422 North Park, N.E.     |
| Historian      | Miss Marian Jennings   | 1446 Bridge, N.W.        |
| Editor         | Mrs. Nina Rozema       | 1355 Hollywood, N.E.     |
| Bd. Member     | Joe D. Hanna           | 2319 Riverside Dr., N.E. |
| Bd. Member     | Miss Edna M. McDowell  | 624 Kellogg, S.E.        |
| Bd. Member     | Mr. Charles Moore      | 153 Lowell, N.E.         |
| Bd. Member     | Mr. Fay Reed           | 425 Lafayette, N.E.      |

The Glacial Drifter Staff

|                  |                           |                      |
|------------------|---------------------------|----------------------|
| Editor           | Mrs. Nina Rozema          | 1355 Hollywood, N.E. |
| Publisher        | Mr. Robert R. Rozema      | 1355 Hollywood, N.E. |
| Asst. Publishers | Mr. & Mrs. Leslie Pearl   | 1563 Benning, N.W.   |
|                  | Mr. & Mrs. A. A. Billings | 1430 Griggs, S.E.    |
| Artist           | Mrs. Barbara Roys         | 1145 Veto, N.W.      |

---

The Grand Rapids Mineral Society is a Non-profit Corporation affiliated with the Midwest Federation and the American Federation of Mineral Societies.

Meetings are held the 2nd Wednesday of each month at 8:00 p.m. at Riverside Elementary School, 2420 Coit, N.E. (Sept. thru June).

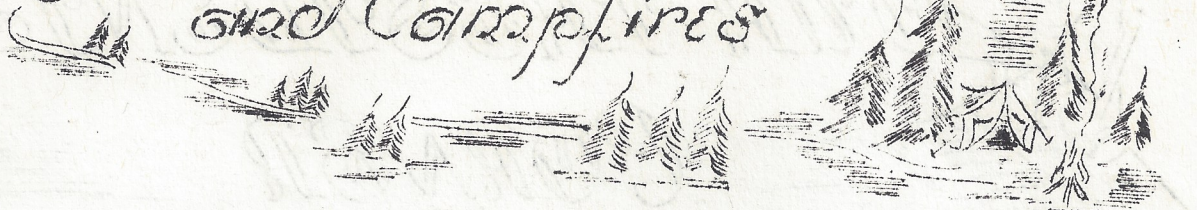
Advertising in the DRIFTER is at the rate of \$3.00 per issue.

ALL material to be published must be in the hands of the editor no later than the 25th of the month preceding publication.

Permission to reprint material appearing in the DRIFTER is hereby granted provided proper credit is given.

Member of Bulletin Editors Association.

# Yukon Trails and Campsites



The regular monthly meeting of the Grand Rapids Mineral Society will be held on Wednesday, April 18th at 8:00 p.m. at Riverside Elementary School, 2420 Coit N E. This is a meeting which no one should miss. We are having a double feature!! First of all, Mr. J. Leslie Livingston will give a slide talk on "Yukon Trails and Campsites" and secondly, Mr. Lowell Palmer will give a slide talk on his trip to the west coast.

Mr. Livingston is a member of the Grand Rapids Color Club and does beautiful work with the camera. We are indebted to Mr. August Post for getting him for our program.

Most of us do not need an introduction to Lowell Palmer. He is a very active club member and will have a display of a few of the items he collected on his trip last year. His talk will give information on the collecting areas he visited.

Gus Beuker will have a door prize for some lucky member.

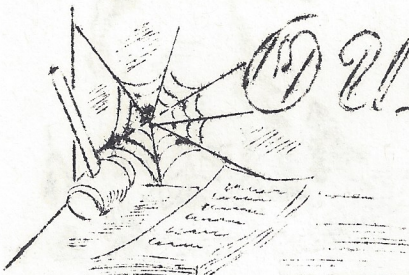
## ROCK SALE TABLE DISCONTINUED

Due to lack of salable material and the resignation of Mr. Henry Tchozeski as head salesman for the rock table, this feature of our meetings will be discontinued for the time being. If some willing worker will volunteer to take over this task we will resume this activity in the fall. In the meantime, look over your material and if you have something you are willing to donate please see that it is properly labeled with name of item, location and approximate value. And, while on your collecting trips this summer, pick up a little extra for this use.

The Board of Control, and, I am sure, all of the members of the club are sorry to lose Henry as our head salesman. He has been very busy with this job from the beginning of our organization and feels that he would like a rest from the heavy work of hauling the boxes and boxes of rocks back and forth for the meetings. A heartfelt thanks to him and his son Steve for the hours spent behind the Rock Sale Table. All of us will miss them.

## DISPLAY CASES FOR SALE

Miss Marian Jennings will have charge of the order desk for the display cases which will be available at \$10.00 each to club members. These are beautifully built Wichita type cases, approximately 2' x 2' with glass front and two glass shelves. Your money MUST accompany your order.



# OUR PRESIDENT'S CORNER

It is strange how the events of our lives come up at us like summer showers, and how quickly they become history, our history however it may appear to us.

In January, when we were suddenly aware of the work necessary to get our annual show ready, it still seemed quite remote, two months away; but sixty days can and do slip by just too quickly. Suddenly we were all faced with the task of organizing the whole enterprise; and what with all the questions that seem to crop up out of nowhere, it kept the show committee on the jump. But it got in place!

From the comments of viewers and even our own club members, the show was a success. Now this is not said to detract from the efforts of our predecessors because it should show improvement just from the experience gained. Also we are more conscious, as a club, of quality in our acquisition and attainments. Thus, with the constant re-arrangement of our home displays, we attain artistry in grouping and proportion. Too, we are on a more knowledgeable premise than formerly, as the constant presentation of programs which instruct, benefit the club immeasurably in this respect.

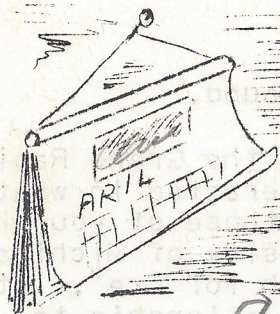
So, to all of you who participated, I hope this has been a most helpful experience; one which will find you another year ready and willing to show your hobby to the public. To all of you a hearty thank you for your cooperation.

To the show committee, singly and together, I can only say yours has been a task well done and thank you for the time and effort expended.

To those who were hosts and hostesses, and volunteers in the pinches, it was most gratifying to have your assistance. Without those who put on the demonstrations, the whole display would have fallen short, so, without singling out any one in particular, please accept my regards.

To the Grand Rapids Public Museum Association, the Museum Director, and the Museum Staff, we are grateful for the use of this fine hall to express our attainments in this wonderful hobby. May we merit your consideration another year.

Leslie G. Pearl, President 1962



# CALENDAR of EVENTS

- April 18 - Wednesday at 8:00 p.m. Regular monthly meeting at Riverside Elementary School, 2420 Coit, N.E. Slides by Mr. J. Leslie Livingston and Mr. Lowell Paimer on "Yukon Trails and Campsites" and "A trip to the West Coast" respectively.
- April 23 - Monday at 8:00 p.m. Board of Control Meeting at home of Miss Jane Cichaniewicz, 809 Franklin, S.E.
- April 25 - Wednesday at 8:00 p.m. Mineralogy Group meeting at home of Mr. and Mrs. Willis Atwell, 152 Fuller, S.E. Mr. Robert Reed Rozema, leader.
- April 28-29 - Saturday and Sunday at 10:00 a.m. Field trip to Terre Haute and Nashville, Ind. See details elsewhere in this issue. Mr. Charles Sweet, Field Trip Chairman.
- May 9 - Wednesday at 8:00 p.m. Regular monthly meeting at Riverside Elementary School, 2420 Coit, N.E.
- May 12 - Saturday at 9:00 a.m. SHARP Field trip to Rogers City. Details elsewhere in this issue. RESERVATIONS IN BY MAY 11. Mr. Charles Sweet Field Trip Chairman.
- May 14 - Monday at 8:00 p.m. Board of Control Meeting. Place announced next month.
- May 19-20 - Saturday and Sunday ROCKFEST, Kalamazoo Geological & Mineral Society at Recreation Park in the Community Center Building. Let's reciprocate by paying them a visit. Their member, Clark Wolf did the faceting demonstration for our Show you know.
- July 27-31 - Friday through Tuesday. Midwest Federation & American National Gem and Mineral Exposition, Des Moines, Iowa. The Des Moines Lapidary Society, host.
- Sept. 29-30 - Saturday and Sunday. ROCKRAMA & FIFTH ANNUAL SHOW, Rib Mountain Gem & Mineral Society, Inc., Youth Building, Marathon Park, Wausau, Wis. Would you like a field trip in this area? If so, let the Field Trip Chairman know.
- Oct. 6-7 - Saturday and Sunday. Midwest Federation ROCKRAMA Walker Sports Arena, Muskegon, Mich. Muskegon County Rock and Mineral Assn. host.

## LAST MONTH'S MEETING

By Barite Rose as told to I. Emma Rockhound.

Barite and I were talking about the last program of the Grand Rapids Mineral Society and I thought that you might be interested in what he had to say about Dr. Kelly's presentation. For those of you who missed the program, Professor Kelly from the University of Michigan gave a very informative program entitled "The Search for Ore". It was primarily on the hydrothermal ores and their relationship to the surrounding country rock. He described the role of limestone as a ----- but let's let old Barite tell it. This is as close as I am able to quote from our talk after the meeting:

Say! That young feller sure knowed his Geology didn't he. Sure wished I'd knowed him fifty years ago--I'd a been a rich man steada where I am now.

I member once back in Butte, Montana I was teamed up with an old Welshman prospectin fer whatever we could find when he hears bout a find of Black Jack. That professor Kelly feller called it sphalerite, but no matter what ya calls it, it's zinc, and that's money. Well anyways, he says: "come on Barite, you old codger, we're gonna strike it rich". I figures the heats gittin him, so I don't say much but then he up an says: "Black Jack rides a red horse!" So I knows the heat's gettin him, but he tells me that back in Wales where he was workin in the mines as a kid, they all knowed that. He says you always find manganese next to Black Jack. Well I never hearda that, but he says that the red horse is rhodochrosite an we ain't doin nothin where we are so I says: "O.K.", and we goes over an sure enough we finds it. Trouble was that neither of us had much schoolin an a couplea sharp Easterners swindled us out of it.

Course now them geologists knows all about Black Jack an the red horse an theys figgered out lotsa other things bout prospectin that I ain't never heard of, but that Kelly feller sure know it, didn't he.

You know he just took one kind of ore body an he really only told a little about it. Theys lotsa things bout them hydrothermal intrusives that he didn't even mention. He didn't never get to pegmatites. That's what these folks would like to find with all them crystals an stuff; and he didn't tell bout them zinc ores like they got up round Sudbury, nor any the others, but he sure told a lot, didn't he.

Ya know, listenin' to him makes an old goat like me realize how little I know. I didn't know nothing bout chemistry but now ifin ya wants to be a geologist, ya gotta study that chemistry they gives ya in high school real good. I heard a couple kids talkin there when the program was goin on. He was talkin bout oxidized zones an this one kid wasa sayin they'd just had some oxidation reduction problems the other day, but he couldn't see no sense in learnin that stuff but I'll bet they sees the sense now. Ya, an I seen the day when a fella what knowed a little physics saved us a heapa luggin just knowin how ta help us build a machine ta do the work. An if I'd had a little readin an language, we might still have that manganese mine we found out in Butte. Continued on next page.

LAST MONTH'S MEETING Concluded.

Awal, you're never too old to learn! That's why I ben commin to them there meetins of the Grand Rapids Rock Club. Them folks just wants to find agates an stuff like that there. I knows ya got to know where to look for 'em, but I'm goin cause I'm gonna strike it rich yet some day, you just wait an see.

Ahya! An before I forget it, I noticed that newspaper fella settin in the back row over by the door readin his paper all through the meetin. I spose there ain't nothin ya can do but keep the younguns from runnin round kuz when ya gotta go, ya gotta go. But seems to me that newspaper fella must like his work awful good not to be able to leave it for a program like that one. I heard him say once he didn't know a trilobite from a hunka granite. Wall he ain't gonna find out in that there newspaper of his. Course it has given that there rock show you put on an awful lotta good publicity. So I 'spose ya shouldn't complain least 'till it's all over.

#### ROGERS CITY FIELD TRIP PLANNED FOR MAY 12

Through the efforts of Mr. Leo Hoogerhyde, we have again received approval for a field trip to the Calcite Plant at Rogers City. This is planned for Saturday, May 12.

Please advise Mr. Charles Sweet, Field Trip Chairman, if you plan to make this trip. RESERVATIONS must be made by May 1st, in order that the company may arrange for guides. Leo has requested a split activity. Should part of the group so desire, they will be escorted directly to the fossil areas. The others, should they care to, may make a tour of the operation before going to the fossil areas.

The main gate is located at the foot of Calcite Road in Rogers City. The group will leave at 9:00 a.m. SHARP. It has proven out to be more convenient to bring a lunch with sufficient beverage for the day. Those desiring to, however, may go back to town to eat when one of the guides leaves for lunch and then meet him at the gate when he returns.

Those who have made this trip in the past have, by their adherence to good safety practice, keeping children under control and no litter-bugging, made our club welcome for this repeat visit. Let's make this a safe, litter-free trip so that we will be invited again another year.

#### MINERAL GROUP MEETING

The Mineral Group under the leadership of Bob Rozema will meet at the home of Mr & Mrs. Willis Atwell, 152 Fuller SE, at 8:00 pm on WEDNESDAY, April 25. Please note change of day. Anyone interested in learning more about minerals is invited to join this group. The project for the next few months is to have a display case at each of the regular monthly meetings with a definite theme. The April case will have a specimen from each of Dana's eight catagories. The May meeting will feature native elements. Some of the future meetings will have carbonates, sulphates, oxides, borates, etc. Be sure to take a look at the April Display at the meeting on the 18th.

## TERRE HAUTE FIELD TRIP TO BE APRIL 28-29

P A field trip to Terre Haute and Brown County Indiana for fern fossils and geodes is planned for Saturday and Sunday, April 28th and 29th. The group will meet at Stuckey's (south of Terre Haute on the left side of the highway as you are driving south) at 10:00 a.m. on Saturday. On Sunday, the 29th, the group will meet at 10:00 a.m. at the City Hall in Nashville, Indiana and proceed from there to the geode areas. Contact Mr. Charles Sweet, Field Trip Chairman, for further details.

### A REPORT ON JUNIOR

Most parents, when they read that heading, either look for the old razor strap, or glumly accept the offense as mildly as hot wrought temper can. But this is not a case for either, as we can be proud of our young lapidary artists who participated in this season's winter geology club at the Grand Rapids Public Museum on Saturdays.

But without the able help of Mr. Russell Girard, it would not have given them the opportunity to manipulate material and machinery in the ancient art of attention to detail.

Every Saturday, storm or calm, this member of our association made the trip from Holland, Michigan to teach our small fry; and it is with this in mind that we give this article as a token of our thanks. We hope we may have the pleasure of continuing with you in this work next fall, Russ, and that your summer travels will reward you with some good cutting material. And boys and girls, Mr. Girard has a surprise in store for those who participated this past season, so save a place for the Saturday Geology Group meeting.

Your reporter, Elgee

### MARCH MINERALIZERS

The meeting of the Mineral Group of the GRMS was held at the home of Mr & Mrs Charles Sweet, 111 National S W, on the evening of March 29th.

Although this group is small, it is dedicated to the understanding of the known minerals which form some of the most fascinating and wonderful creations given man.

The meeting was given over to discussions of worthy projects to share our enthusiasm of the subject with our fellow club members. Mr & Mrs Sweet had prepared a fine display of borax minerals and showed a movie by the sponsors of "Death Valley Days", the U.S. Borax Company. It was most informative. It made known to us the wide diversity of uses to which this versatile product is put, from soap to space rocket fuel.

I know all of us who attended would heartily recommend this as a program for the whole society. And it is just possible the future will find it on the program committee's agenda.

The Sweets traveled to Boron, California last year and made contact with the officers of that company. Their reward was (continued)



LAST MONTH'S MEETING Concluded.

Awal, you're never too old to learn! That's why I ben commin to them there meetins of the Grand Rapids Rock Club. Them folks just wants to find agates an stuff like that there. I knows ya got to know where to look for 'em, but I'm goin cause I'm gonna strike it rich yet some day, you just wait an see.

Ahya! An before I forget it, I noticed that newspaper fella settin in the back row over by the door readin his paper all through the meetin. I spose there ain't nothin ya can do but keep the younguns from runnin round kuz when ya gotta go, ya gotta go. But seems to me that newspaper fella must like his work awful good not to be able to leave it for a program like that one. I heard him say once he didn't know a trilobite from a hunka granite. Wall he ain't gonna find out in that there newspaper of his. Course it has given that there rock show you put on an awful lotta good publicity. So I 'spose ya shouldn't complain least 'till it's all over.

#### ROGERS CITY FIELD TRIP PLANNED FOR MAY 12

Through the efforts of Mr. Leo Hoogerhyde, we have again received approval for a field trip to the Calcite Plant at Rogers City. This is planned for Saturday, May 12.

Please advise Mr. Charles Sweet, Field Trip Chairman, if you plan to make this trip. RESERVATIONS must be made by May 1st, in order that the company may arrange for guides. Leo has requested a split activity. Should part of the group so desire, they will be escorted directly to the fossil areas. The others, should they care to, may make a tour of the operation before going to the fossil areas.

The main gate is located at the foot of Calcite Road in Rogers City. The group will leave at 9:00 a.m. SHARP. It has proven out to be more convenient to bring a lunch with sufficient beverage for the day. Those desiring to, however, may go back to town to eat when one of the guides leaves for lunch and then meet him at the gate when he returns.

Those who have made this trip in the past have, by their adherence to good safety practice, keeping children under control and no litter-bugging, made our club welcome for this repeat visit. Let's make this a safe, litter-free trip so that we will be invited again another year.

#### MINERAL GROUP MEETING

The Mineral Group under the leadership of Bob Rozema will meet at the home of Mr & Mrs. Willis Atwell, 152 Fuller SE, at 8:00 pm on WEDNESDAY, April 25. Please note change of day. Anyone interested in learning more about minerals is invited to join this group. The project for the next few months is to have a display case at each of the regular monthly meetings with a definite theme. The April case will have a specimen from each of Dana's eight catagories. The May meeting will feature native elements. Some of the future meetings will have carbonates, sulphates, oxides, borates, etc. Be sure to take a look at the April Display at the meeting on the 18th.

## MARCH MINERALIZERS (concluded)

the forwarding of a fine evening's informative entertainment. We who shared this work of the Sweets, want them to know we are truly thankful for all they did in preparation.

So, to you of our society who want to learn something about minerals, you are welcome to join the Mineral discussion Group which meets the fourth Thursday of the month (May's meeting will be on Wednesday). Watch the DRIFTER for the time and place.

Lucile Pearl

### POSSIBLE AMENDMENTS TO BY-LAWS

A committee composed of Dr. Rose, Nina Rozema, Charles Moore, and Charles Sweet has been appointed to study the possibility of amending our By-Laws. The primary suggested change would affect the date of our fiscal year. It is felt by some that by changing the beginning date from January to September many administrative problems would be solved. A few of the arguments for this date change follow.

Our indoor meetings start with the opening of the school year, thus September would be the more natural time for the new officers to start their terms of office.

By electing the new officers at the last indoor meeting in the spring (April or May) they would have the summer months to plan an entire year's program starting with the September meeting. New projects, etc. could be started early without the problem involved with the January administrative change - mid-season so to speak - allowing for a more co-ordinated program. Committees could be appointed and the summer months could be used to formulate these plans. This would be especially helpful in the case of the Show Committee. Another suggestion has been to appoint a standing committee to head the rock show.

These changes would, of course, necessitate other changes. Election date - possibly the date of the annual meeting. And some co-ordination of the field trip committee as summer field trips must be planned well in advance.

There are many other points to ponder before amending the By-Laws. For one thing, it will necessitate a short term of office - probably for the next group of officers. If you have any feelings on the subject contact one or more of the present board members so that they will know your feelings before making any changes. If there are any changes that you would like to see made, please suggest them to the directors.

How about having the Directors hold office two years with half being elected each year? This would insure that at least half of the members would be experienced - or perhaps you would rather leave it as it is now - this way, if you don't like the way the board runs things you can vote them all out of office and start over with an entire new board. In the past at least half have been re-elected each time anyway. Let's hear your comments. It's your club!!

Richard W. Rose

## THE SHIPPER

Today, dear children, we will hear not of Paul Revere, but of a package destined to upset anyone who has ever shipped or posted a consignment of valued material thinking it would arrive safely.

If any of our members who viewed Mr. Lowell Palmer's most instructive window display during this March show, and then go out and expect a stranger to carry his prized possession to its destination when insecurely packed, there can be only one word that suffices to explain him, a "dunce".

Lowell showed as purposefully and delightfully as one can, the care necessary to returning home with fragile specimens. These, of course are right under the watchful eye of the owner all the way and their arrival at their destination is usually assured in good condition.

But let us say we wish these to reach a friend who we are unable to visit and present our finds in person. So we pick on the postal service.

Some of us are naive enough to believe we need only stuff the object into a box of crumpled newspaper, tie it with a string and post it, with the brazen assumption all men are our servants. But some of us are particular and careful, and to the best of our abilities, do take every precaution we feel necessary to our package arriving safely, only to learn of its disaster along the way.

Now insurance is one answer, when packing was carefully done, to protect you and the carrying service. But you, as a user of the postal service, have a right to believe the personnel of this governmental department will protect your shipment. The protection of your shipment is a duty accepted by every man who walks with the stamp of U.S. Government upon him, an honored designation, I am sure. For when he is sworn in, we as the public are assured of his loyalty to US the people the same as our armed services.

Now, I know there are parcels sent which drive the postal service nuts, for they are sent with an utter disregard to their ultimate handling; and it is easy to see why disgruntled employees give them the merry heave-ho. But when a package is dutifully packed, taped, tied, and bound, then stamped "fragile, do not crush" and arrives at its destination mangled, no amount of yelling will convince me the hoghead at the throttle was to blame. A mirror on the wall would answer more truthfully.

So there is a moral to this story to all of you rock shippers. Take nothing for granted, even the intent of your governmental employees. Double such bulk shipments in good strong, close woven burlap bags. Box double and treble if the object is desired whole at its destination. Use chopped paper and sawdust or corncob mulch as filler. Better than strawboard boxes, use wood and ship express, it is safer. Some use 5-gallon metal pails. Bind all packages with tape and strong cord - not binder twine or string - a woven cord is best. The outer label may get lost or damaged, the inner label assures your ownership. (continued next page)

## The Shipper (concluded)

And remember, the man at the window represents the company, or government unit with which you are dealing in shipping. It is his duty to advise you that your package is insecure, but ten chances to one he will not; as all he is interested in is getting it out of his hands so the next sucker will pay to have his package "smashed" as the baggage smashers used to put it.

Shippers, beware!!!

The Louser-Upper.

---

Adv.

REED'S BRUSH & ARCHERY CO.  
425 Lafayette, N.E. Phone GL 9-6048 Grand Rapids 3, Mich.

Have you ever thought you'd like a brush made just as you want it? Maybe we can help you design it and make it, of course.

Or do you have a good old brush that needs new whiskers? Maybe we can grow a new crop. This saves time and money.

How about that favorite bow? Need re-balancing? New String? Arrows that have molted? Or have confused ends?

P.S. We make a nice stiff brush that stays stiff in hot water. Sometimes makes an old rock good enough to keep.

Remember, we are a factory, we make things: one product, satisfied customers.

---

Adv.

ro z e m a ' s r o c k p i l e  
776 Leonard, N.E. Phone 742-3383 Grand Rapids 5, Mich.  
Hours: 9:00 a.m. to 9:00 p.m. Daily

Fluorescent Minerals at low, low prices

Galaxie - Satellite - Gizmo - 49er Tumblers - polishing kits

Franton, Poly, Rock's, Gemlap Lapidary equipment

Silver - sheet & wire - tools, etc. large stock findings

Unusual and ordinary mineral specimens - cutting rough & slabs

"Grand Rapids' Oldest Complete Rock Shop"

---

# Do you know —

~ THAT ONLY 6 METEORITES WERE REPORTED FOUND IN MICHIGAN, WHICH REALLY WERE METEORITES.....

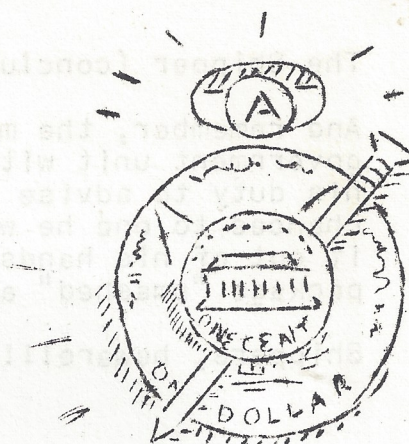
## LOCATIONS:

GRAND RAPIDS

ALLEGAN

REED CITY

ROSE CITY (3)



~ THAT OF THE 6 NATIVE MINERALS, 4 ARE FOUND IN MICHIGAN?

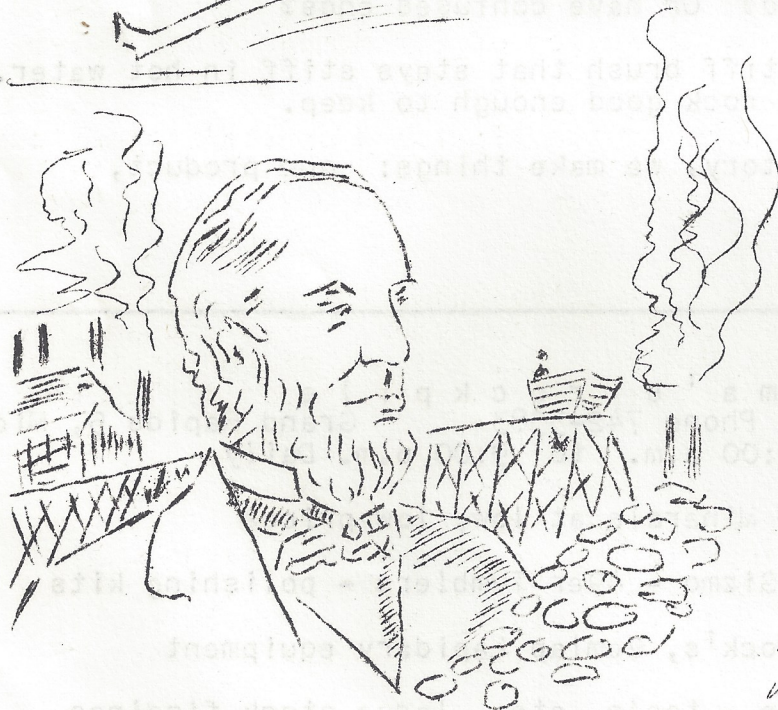
GOLD - (AU)

SILVER - (AG)

COPPER - (CU)

IRON - (FE)

DO YOU KNOW THE OTHER 2? \*



THAT GOVERNOR HENRY P. BALDWIN'S MESSAGE TO THE LEGISLATURE IN 1869 CALLED FOR A COMPLETE GEOLOGICAL SURVEY WHICH RESULTED IN OPENING MICHIGAN'S RICH U.P. MINES....

ANNUAL GEOLOGICAL GRANT BY LEGISLATURE THEN - \$8,000 WITH  $\frac{1}{2}$  FOR EACH PENINSULA....

BY WILLIS ATWELL

\* PLATINUM, MERCURY \*

## OUR THIRD ANNUAL SHOW

The show is over! What a wonderful, beautiful and educational one it was. You know those members really were on the ball--presentation, display, color--wouldn't know but what professionals were in there.

The splendors of the sea and earth! Did you notice the black coral and the volcanic material, Pele's hair and the attractive display by Miss Maxine Atwater and Miss Edna May McDowell; and the agatized coral from our own Florida in not only specimens but attractive pendants so aptly done by our Joe Hanna, Jr.

The remains of the once sea? Trilobites, marcasite brachiopods and colonial coral. Those Petoskey stones! what one can do with ones own native stone done by the Dr. Robert Smith family and Gerry Morris.

Did you realize how beautiful the petrified wood could be colorfully displayed as by Mrs. Robert Reed Rozema.

And the gems so artfully shaped--by themselves and with silver. Mr. and Mrs. Jack Baines, Mr. Gene M. Smith faceted stones, Mr. and Mrs. Wm. Brimmer, Newton A. Cairns, Dale Rosel and son, Bill, Jim Waldron and Steve Tchozeski among the junior members of the club, Russ Girard and his Grand Rapids Juniors, the Conklin 4H, the silversmithing under the direction of our member Mrs. Willem Clous.

The mineral displays were much in the light and crystal formations. From East to West, North to South -- selenite, quartz, azurite, and many others shown by the James DeZwaan, Sr. and Jr., August Post, Bob Rozems.

Did you notice the many ways of testing rocks in the informative display done by Mr. Willis Atwell and daughter, Mary; and another educational display by Mrs. Ronald Roys, the use of copper in our everyday living; and the man-made silicon carbide display by the Charles Sweets.

The outside windows were really something. The Lowell Palmer display of the rockhound's equipment for safety, identification, shipping; the history of fossil life by Mrs. Reed Waterman; artifacts of our own American Indian by Rev. Marvin Walter; fossils from South Dakota by Dale Rosel; geodes by Jack Kirkwood family and Mr. and Mrs. James Perkins; and the garnet crystal story by Leslie Pearl.

And thanks to all the exhibitors in making this a successful show and last, but certainly not the least, the ShowCommittee isto be complimented and sincerely thanked for their diligent work in putting together this better-than-ever-before Annual Show-- Mr. Fay Reed, Chairman, Mr. Gerry Morris, Mr. Willis Atwell and Mr. Jack Kirkwood and their helpful assistants.

Lucile Pearl

## SO YOU'RE A ROCKHOUND

Remove your shoes my fellow hound,  
You're standing now on holy ground  
For God who brought forth sea  
and land  
Out of the earth created man,

Lets follow him within our mind,  
(The path with stepping stones  
is lined)

Rocks often may the pathway screen  
But gems are few and far between.

First Abel's righteous blood was  
split.

Beside the altar he had built.  
On altar made of native rock  
He had offered firstling of  
his flock.

Tubal-cain first in iron wrought,  
A rock for anvil hard he sought,  
His hammer too was made of stone  
For steel at that time he had none.

Young Jacob Forsakes home and  
mother,  
He's helped deceive his only  
brother  
And on a stone the night he spent,  
'Twas fitting he should there  
repent.

The Israelites whom God set free  
And passed them through the great  
Red Sea  
Picked rarest gems from desert  
State  
To mount in High Priest Aaron's  
plate.

Saint John has brought to us a view  
Of an eternal city, new  
A home for all who will endure,  
Whose four-square walls are gem-stone pure.

Methinks there'll be more lasting joy  
For man and woman, girl and boy  
If in the mineral, rock or flower  
We'd see our God's creative power.

Newton A. Cairns

When DAvid, trusting in the Lord  
Went forth to face Goliath's  
Sword,  
He chose smooth stones from  
river bed  
To crush the braggart giant's  
head.

King David's son built temple  
wall  
Of ashlar stones both great  
and small.

It laid on arches strong and  
sure,  
A keystone held each one secure.

When Sheba's queen for wisdom  
sought  
She brought to Zion lot on lot  
Priceless stones and jewels fair  
And Ophir's gold she did not  
spare.

The church that Jesus built on  
rock  
No power on earth can move or  
shock.  
It's founded there so strong and  
well  
'Twill prevail against the gates  
of hell.

Alas! that stones the life should  
take  
Of Stephen who, for Jesus sake  
Had cried against the priestly  
strife,  
Yet he prayed for those who took  
his life.





THE GRAND RAPIDS MINERAL SOCIETY  
1355 HOLLYWOOD NE  
GRAND RAPIDS 5, MICHIGAN  
RETURN POSTAGE GUARANTEED



Mr. Kreigh Tomaszewski  
333 Richard Terrace S.E.  
Grand Rapids 6, Mich.