

Volume 6, no 10, June, 1964



the

GLACIAL

DRIFTER

BOARD OF CONTROL

President	August Fost	5647 - 34th Street Caledonia
Vice President	Jack Kirkwood	13543 Pine Lake Rd Cedar Springs
Secretary	Miss Jane Cichaniewicz	809 Franklin S E
Treasurer	Mrs. Lucile Pearl	1598 Gridley N.W.
Liaison Rep.	Dr. Richard W. Rose	422 North Park N.E
Historian	Miss Marie Spielmaker	4680 Burlingame S... Wyoming
Editor	Mrs. Nina Rozema	1355 Hollywood N E
Past President	Robert R. Rozema	1355 Hollywood N E
Board Member	James DeZwaan, Jr.	1656 Andrew S E
Board Member	Leo Hoogerhyde	1008 - 61st S E
Board Member	Cornelius Doornbos	1917 Rosemont S E
Board Member	Henry Tchozeski	2941 Edgewood N E

GLACIAL DRIFTER STAFF

Editor	Mrs. Nina Rozema	Phone 742-3383
Artist	Mrs. Barb Roys	1145 Veto N...
Publisher	Robert R. Rozema	1355 Hollywood N E
Asst. Publishers	Mr. & Mrs. A A Billings	1430 Griggs S E
	Mrs. Lucile Pearl	1598 Gridley N.W.
	Miss Marion Jennings	1446 Bridge N...
	Miss Esther Hall	735 Fountain N E

The Grand Rapids Mineral Society is a non-profit corporation affiliated with the Midwest Federation and American Federation of Mineral Societies.

Meetings are held at Riverside Elementary School, 2420 Coit N E the 2nd Wednesday of each month at 8:00 P.M. (Sept. thru April). Annual meeting second Wednesday of May at Riverside Junior High. Summer meetings at different parks as announced.

Advertising in the DRIFTER is at the rate of 3.00 per issue. (Advertisements published Sept. thru May only)

All material to be published must be in the hands of the editor no later than the 25th of the month preceding publication.

Permission to reprint material appearing in the DRIFTER is hereby granted provided proper credit is given.

Member - Bulletin Editors Association.

OUT-DOOR MEETINGS FOR SUMMER MONTHS

Unlike many clubs, we continue to have meetings during the summer months - but rather than coop the members up in a warm building - we have our meetings out-of-doors.

Our June meeting will be the first such get-together of the season. We will hold this meeting at CALEDONIA COUNTY PARK on Wednesday, June 10. Those of you who wish to do so may bring your supper and eat under the trees. We will be picnicing from 6:30 to 8:00 and then will have our regular meeting. In case of rain - don't stay home - we have reserved the shelter house.

Lowell Palmer will present the program. Those of you who have enjoyed other programs he has presented will not want to miss this one. And if you haven't had the privilege of hearing him before - this is your opportunity. He does a bang-up job of it - showing some of his favorite collecting areas and bringing specimens of materials he has collected.

Joe Parish has door prizes for some lucky people.

If there is enough interest, we will have a Lapidary-of-the-Month competition.

ELECTION RESULTS

At our Annual Meeting in May you decided on the following to serve you for our year which starts September 1st:

President	Gerald B. Morris
Vice-President	James Waldron
Secretary	Miss Jane Cichaniewicz
Treasurer	Mrs. Lucile Pearl
Liaison Rep.	Dr. Richard W. Rose
Historian	Miss Marie Spielmaker
Bulletin Editor	Mrs. Robert R. Rozema
Board members	Richard Damstra
	James DeZwaan, Jr.
	Miss Esther Hall
	Miss Marion Jennings

With the leadership of these loyal members and your continued support our organization should continue to grow. Any suggestions for programs or other activities will be gratefully received by your Board of Control.

Dr. Sandefur of Michigan State University presented a very well received program of the geology of Michigan.

SHORT DRIFTER DURING SUMMER

A one-page DRIFTER will be coming your way for July and August. But in September we will go back to our full size publication. Look for an article by Barb Roys on Iron Mining in your September DRIFTER.

REPORT ON MAY 16 FIELD TRIP TO CHENEY QUARRY

That rainy Saturday morning of May 16 must have scared out many from going to the Cheney Quarry at Belleview. It did seem kind of silly, for nature kept pouring it on. The Merricks, Wednts, DeZwaans, Littlefields, Reeds and yours truly were the optimists not to be bluffed by the antics of Jupiter Pluvus. 9 A.M. found the skies clearing and holding the rest of the day.

The trip was rewarding in that many of the fine calcite crystal specimens had chalcopyrite crystal deposited on the pure white faces. Also the variety of crystal forms in the pyrite that are found in this quarry only. The trip was worth while with two or three prized acquisitions, but we came back with extras for that club auction in the fall.

The proximity of this quarry may tempt us to plan another visit there in the fall.

Casey Doornbos, Field Trip Chmn.

FIELD TRIP TO SYLVANIA AND FRONTIER CITY

Field Trippers will meet at the quarry at Sylvania at 9:30 A.M. on Saturday, June 6. Directions to Sylvania - you can take U.S 127 and U S 223 south of Jackson to Sylvania, turn right at third traffic light (Monroe St) west to Silcia Drive near school. Turn left (south) to Convent Blvd, right to Centennial Rd. South to Brint Road. Quarry is on northwest corner of Brint and Centennial.

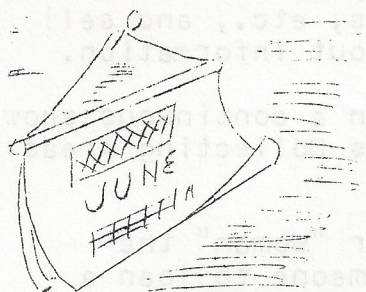
Alternate route - US 96 to Brighton, then 23 south to 223, and Sylvania. West on 223 (Monroe St) to Silica Ave, follow rest of route.

Frontier City at Onsted will be about an hour's drive as you go back home on U S 223.

FERN FOSSILS AND GEODES FOR JUNE 13 and 14

Terre Haute, Indiana and Brown County will be the destination for you field-trippers the week-end of June 13 and 14. As the fossil area is approximately 350 miles from Grand Rapids many of you will want to spend Friday night in the area. For you campers it is suggested that you camp at Turkey Run State Park. We will meet at the mine which is approximately two miles south of Terre Haute at 10 A.M. For first-timers to the area. proceed south out of Terre Haute on US 41 for about 2 miles. On the left you will see a Stuckey restaurant, the road to the mine runs on the north side of this building. Follow this gravel road for approximately twomiles, across the railroad track and then follow the gravel road south to the collecting area. Saturday night it is suggested that you plan to camp at Brown County State Park. Collecting area for geodes is in Brown County on Bean Blossom Creek. For further information on this area contact the field trip chairman either at the June meeting or byphone.

Casey Doornbos, Field Trip Chmn.



CALENDAR of EVENTS

- June 6 Saturday, 9:30 am meet at Sylvania quarry for field trip. Afternoon and evening to Frontier City, Onsted, Michigan for rock swap. Details elsewhere in DRIFTER.
- June 10 Wednesday, 6:30 to 8:00 pm picnic at Caledonia County Park. Regular meeting at 8:00 in shelter house at park. Lowell Palmer, speaker.
- June 13-14 Saturday and Sunday. Field Trip to Terre Haute and Brown County, Indiana for fern fossils and geodes. Details elsewhere in DRIFTER.
- June 15 Monday, 8:00 pm Board of Control Meeting (present and newly elected) at home of Dr & Mrs Richard W. Rose, 3244 Springbrook Dr., Comstock Park.
- July 8 Wednesday, 6:30 to 8:00 picnic and regular meeting at 8:00 at Douglas Walker County Park, Byron Center.
- July 13 Monday at 8:00 pm Board of Control Meeting.
- July 23-24-25-26 Thursday, Friday, Saturday and Sunday. Midwest Federation Convention in Muskegon. Details on flier in DRIFTER
- August 12 Wednesday - picnic and meeting at Fallasburg County Park. Lowell
- August 17 Monday, Board of Control Meeting.

MINERAL STUDY GROUP MEETING

The Mineral Study Group had a very interesting meeting in May. Dr. Rose showed slides of his trip to the Sudbury area of Canada. The meeting was held at the home of Mrs. Lucile Pearl.

This group will hold its next meeting in September. Watch for details in the September DRIFTER.

MUSKEGON CLUB NEEDS HELP

The Grand Rapids Mineral Society has been asked to help with the Mid-West Convention to be held in Muskegon July 23-26. Tentatively we will man an Information Booth, pass out maps, etc., and sell Geological Booklets, Maps and attempt to give out information.

In conjunction with the Booth we plan to put on a continuous show of films and taped slide programs on Michigan's Collecting Areas and Geology.

We will need some help - volunteers to "man" or "woman" the Booth, help to set up and take down. Also, someone to loan a pick-up truck. Do you know a Muskegon Nurseryman who might loan us some evergreens in exchange for some free advertising?

Do you have inch by two slides of:

Cheney Quarry (Bellevue)	Gypsum Mines
Pugh Quarry	The Glen area
Grind Stone City	Shale outcropping at Norwood
The Tip of the Thumb	Quarry at Rogers City
Salt mines at Detroit	Felch
Oil wells	Drummond Island or other islands

Any others of Geological Significance?

If so, please contact Dr. Rose. If you can, please donate the slide, if not and you wish it returned please let us know and then you might give us permission to have your slide duplicated.

MID WEST EMBLEMS AVAILABLE

Did you know that you can get a Midwest Federation Official Directory for only 50¢? This is a 44 page booklet containing names addresses, place and time of meeting of all affiliated clubs. Information on the American Federation and other regional societies officers, division chairman, committee chairmen and other valuable names and addresses. It also has a calendar of events for the coming year, including regional shows and a preliminary program for the Midwest convention July 23-26 in Muskegon.

It contains information on the "Rollin Rock Club" which we can all join and the "Ye Old Timers Mineral Club" open to all over 50 years of age. Or you may be interested in the Midwest Mineral Exchange which is a service of the Midwest Federation publishing every other month a bulletin in which you can list your name and tell what you have to swap and what you would like to exchange for it. Even lists a few collecting localities. Also available are the following:

1 AFMS Car Emblems	50¢	Midwest Key Chains	50¢
AFMS lapel pins	75¢	Midwest Directories	50¢
Midwest Program Planner's Manual	1.15		
Midwest Bola ties, many colors	1.00		
AFMS H.E.L.P. stickers, small for letters	1000 for	2.50	
AFMS H.E.L.P. stickers, large for car bumpers	50 for	2.50	

Order any of the above items through Dr. Richard ... Rose, Liaison Representative.

Some items are available through our club secretary at 75¢ each

MUSKEGON - IN MICHIGAN'S "WATER WONDERLAND"

Welcomes the
1964

MIDWEST CONVENTION
AND

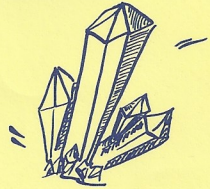
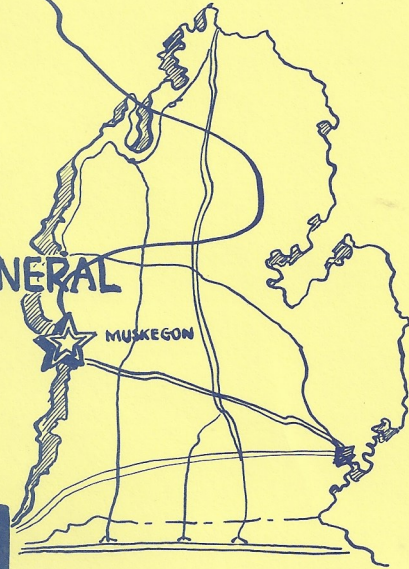
MUSKEGON COUNTY ROCK & MINERAL
ASSOCIATION'S

ROCK AND GEM
FESTIVAL
JULY 23-24-25-26th

10AM-10PM 23rd-25th 10AM-6PM SUN. 26th

L.C. WALKER SPORTS ARENA

470 W. WESTERN AVE. MUSKEGON, MICH.



- ★ *outstanding exhibits.*
- ★ *competetive & non competetive.*
- ★ *continuous programs.*
- ★ *dealers from coast to coast.*
- ★ *working lapidary demonstrations.*

Bring Your Swapping Rocks for the Swap Table.

ADMISSION - ADULTS 75¢ CHILDREN (12 years and under) 25¢

ROCK FUN UNLIMITED and also enjoy Camping, Swimming, Fishing, Picnicking,
in Beautiful Muskegon, Michigan, "The Port City."

Contact the following for additional information:

CHAIRMAN Fred Andersen, 297 Main St.,
Coopersville, Michigan

HOUSING Almeda Boulton, 4th St.,
Muskegon, Michigan

COMPETITIVE EXHIBIT Russ Greer, 1554 Pine St.,
Muskegon, Michigan

PUBLICITY Helen Greer, 1554 Pine St.,
Muskegon, Michigan

SPECIAL EXHIBIT Eileen Sours, 5174 Onsekamme St.,
Montague, Michigan

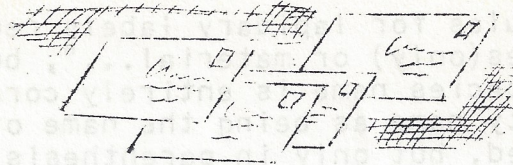
RESERVATIONS Gerald Colburn, 2524 Sternberg Road
Fruitport, Michigan

ADVANCE TICKETS Mary Cooper, 1916 Bundt Drive,
Muskegon, Michigan

HOSPITALITY Mr. David Willson, 2420 Maffett,
Muskegon Hts., Michigan,

HOST SOCIETY Muskegon County Rock & Mineral Association.

M.W.F.



BETTER OF THE MONTH

TIPS FOR EXHIBITORS IN 1964 COMPETITION

by Tolson R. Radloff, Uniform Rules Committee
Chairman

Show time is here again, and those of you who plan to exhibit, especially at the midwest Convention, should be aware of the importance of knowing and using the Uniform Rules when readying your display. Mrs. Helen M. Rice, Secretary of the AFMS Rules and Northwest Federation Chairman, is currently compiling a booklet on tips for exhibitors -- some of her ideas may be of great help to you right now, so here are a few things to keep in mind.

PART I contains procedures which apply to EVERY division of Competition; you should know them well. Be sure you are entering the correct Exhibitor Group. Those who have never exhibited before will have a fair chance in the Novice Group, but only if Advanced and Master competitors are in their correct groups.

PART III contains more specific procedures, but study the complete rules as you are BOUND to use the rules as they are written.

Be sure you enter the correct CLASS, as well as Division - for example, don't enter a General Lapidary Glass when you have only one type of work, such as cabochons.

The Rules require accurate labeling -- don't take for granted that a label from a commercial source is automatically correct, as it may be only a trade name, like "onderstone". If it's not in your reference books, it may be incorrect.

Mineral specimens are required to be labeled with the "Name of the mineral species, the name of variety of the species..." Since the name of a species can only be that name under which a mineral was first designated by authorities, the true name is the species name. The variety of a species is a mineral which has some slight variation from the species, such as color, form or composition, but has the same essential constituents or formula. A good example of this is the species Quartz, which has a variety Amethyst, among others. The true mineral name is still Quartz, and should be labeled such.

Some books go one step further and divide variety of a species into "sub-varieties" which are usually only added descriptive terms. Example: the species in Quartz, variety is Agate, and sub-variety is "plume". Such terms are not essential nor required, and if used must be in parentheses. Many minerals, however, have no varieties, and in such cases the name of the species is enough; but a variety is required on the label if it exists.

(continued next page)

TIPS FOR EXHIBITORS - continued

The rules for lapidary labels requires "the variety of the mineral species(only) or material...", but when no variety names exists the species name is entirely correct. No label should bear a sub-variety name as being the name of the mineral -- it may be used if desired, but only in parenthesis, and preferably on the line under the variety name.

The "material" referred to in lapidary labeling is when the object is composed of rock or organic materials rather than of one mineral. Most of these are not listed in authorized references, but examples such as these are permitted on labels in lapidary; Obsidian, rhyolite, amber, petrified bone, petrified wood, granite, etc.

To be sure which is the species name and which is the variety name of the mineral, USE YOUR REFERENCE BOOKS; Dana's Textbook of Mineralogy has an "Index to species" in the back. All bold type names listed here are species names; the lighter type names are variety names.

Good luck, and remember that careful reading of the Rules will eliminate your losing many points or being disqualified on technicalities. If you have a specific interpretation of a rule question, I will certainly try to help you further. Write our Rules Committee Secretary, Mrs. Cecilia Duluk, 6700 Amboy, Dearborn Heights, Mich, and we will try to aid you.

Generally, however, here are some examples of correct and incorrect labeling:

For Minerals:

Correct:

CERUSSITE
Lead carbonate
Tsumeb, S... Africa

QUARTZ
Var. Amethyst
Silicon dioxide
Mexico

CALCITE
(copper inclusions)
Calcium carbonate
Michigan

wrong:

WHITE CERUSSITE
Lead carbonate
Tsumeb, Africa

AMETHYST
Silicon Dioxide
mexico

CALCITE CRYSTAL with COPPER
Calcium carbonate
Michigan

For Lapidary:

Agate
Mexico

Apache
Mexico

Agate
(Flume)
Oregon

Flume Agate
Oregon

Jasper
Morrison Ranch
Oregon

Bruneau Jasper
Oregon

(continued next page)

Correct	Wrong
Obsidian (Apache Tear) Arizona	Apache Tear Arizona
Agate (Thunderegg) Oregon	Thunderegg Oregon
PYROPE (Garnet Group) North Carolina	GARNET Va. Fyrope North Carolina
JADEITE BURMA	JADE BURMA

* * * * *

A MESSAGE FROM OUR MIDWEST PRESIDENT - RUSS KEMP

You will be happy to learn that our MWFnow has a family of 155 clubs with a total of more than 9000 adult members, your Federation continues to grow in size, activities and enthusiasm.

We are sorry to report that the Indianapolis Society have found it necessary to withdraw their bid to host our 1965 Annual meeting. Before you adjourn for the summer months, consider the advantages of holding a Federation show, we hope that we will receive a bid from one of our member societies at the July meeting in Muskegon for the 1965 Annual meeting which will be our 25th Anniversary Show.

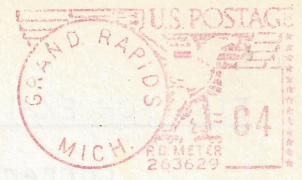
Our efforts in behalf of the American Federation Scholarship Fund are now showing substantial returns, a full report of this will be given at Muskegon, we know that you will continue these efforts even though your society does not meet during the summer months. Many societies and quite a few individuals are giving cash donations as well as supporting the Betty Crocker coupon campaign, keep up the good work and our Federation will move from second place to the top as contributors to this fund.

We look forward to seeing many of you at the Muskegon show and I wish to thank each of you for the cooperation and encouragement that you have given your elected officers and appointed committee chairman during this term.

Enjoy your hobby and have a pleasant collecting summer.

Russ Kemp
President MW F

The Grand Rapids Mineral Society
1355 Hollywood N.E.
Grand Rapids 5, Mich.
Return Postage Guaranteed



Mr. Kreigh Tomaszewski
333 Richard Terrace S.E.
Grand Rapids 6, Mich.

You will be happy to learn that our Makon has a family of 155
clubs with a total of more than 9000 adult members, your Federation
continues to grow in size, activities and enthusiasm.

We are sorry to report that the Indianapolis Society have found it
necessary to withdraw their bid to host our 1965 Annual Meeting.
Before you adjust for the summer months, consider the advantages
of holding a Federation show, we hope that we will receive a bid
from one of our member societies at the July meeting in Muskegon
for the 1965 Annual Meeting which will be our 25th Anniversary Show.

Our efforts in behalf of the American Federation Scholarship Fund
are now showing substantial returns, a full report of this will be
given at Muskegon, we know that you will continue these efforts
even though your society does not meet during the summer months.
Many societies and quite a few individuals are giving cash con-
tributions as well as supporting the Betty Crocker soup campaign,
keep up the good work and our Federation will move from second
place to the top as contributors to this fund.

We look forward to seeing many of you at the Muskegon show and I
wish to thank each of you for the cooperation and encouragement
that you have given your elected officers and appointed committee
chairmen during this term.

Enjoy your hobby and have a pleasant collecting summer.

Fuss Kemp
President MW F